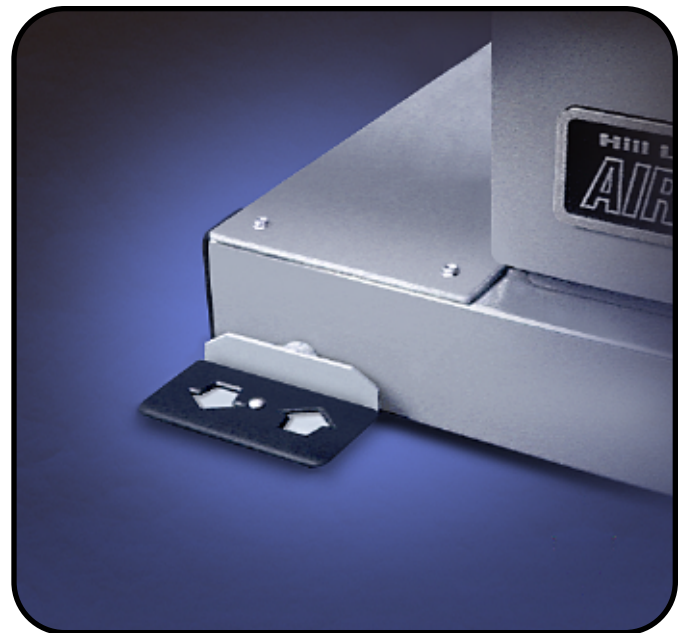


Instructions for the Double-Touch Foot Pedal

The Double-Touch feature is an option available on both the corded foot pedal and the rocker foot pedal.

To use the Double-Touch feature:

- Press either the up or the down side of the foot pedal (for our example we will use the up direction). Touch the pedal once on the up side and the table height will rise until it reaches the maximum height level.
- To stop the table at any height in between, simply touch the foot pedal again on the same side. This stops the table instantly.
- The down direction works in the same way. Touch once to start the motion: touch a second time to stop at the desired height level.




Hill Laboratories
COMPANY